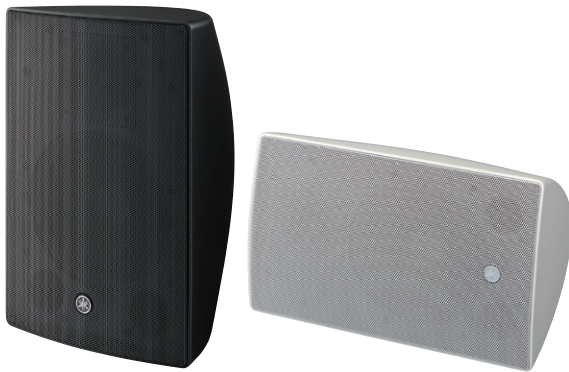


VXS Series

Surface Mount Speaker



VXS8 / VXS8W



VXS5 / VXS5W



VXS10S / VXS10SW
VXS10ST / VXS10STW

Sophisticated sound and design for matching any application.

- Series comprises two full-range models and two subwoofers available in either black or white.
- Features newly customized transducers for superb music reproduction as well as crystal clear announcements.
- Full-range models are equipped with internal transformer that allows operation at both high and low impedance.
- VXS10ST(W) comes equipped with an internal transformer, adding stronger bottom end in high impedance systems.
- VXS8(W) and VXS5(W) offer IP35 rated protection, ensuring use in outdoor applications.
- Subwoofers feature 10" dual voice coil with high pass outputs for satellite speakers.
- Comes with a dedicated bracket for safe, trouble-free speaker installation.
- Overload protection circuit provided to protect speaker components.



Impedance selector

GENERAL SPECIFICATIONS

Model	VXS8 / VXS8W	VXS5 / VXS5W	VXS10S / VXS10SW	VXS10ST / VXS10STW
Speaker Type	2-way, Bass-reflex		Subwoofer, Bass-reflex	
Components	LF	8" Cone	10" Dual Voice Coil	
	HF	1" Soft dome	-	
Coverage Angle ¹	H x V	100° x 100°	120° x 120°	
Nominal Impedance	8Ω		8Ω + 8Ω	-
Satellite Impedance	-		8Ω Load per satellite output recommended ⁴	
Power Rating ¹	NOISE	90W	75W	100W + 100W
	PGM	180W	150W	200W + 200W
Sensitivity ² (1W,1m)	91dB SPL		89dB SPL	96dB SPL
Maximum SPL (Calculated, 1m)	117dB SPL		114dB SPL	125dB SPL
Frequency Range ²	-10dB 51Hz - 20kHz		62Hz - 20kHz	45Hz - 250Hz
Connectors	1x Euroblock (4P) (Input: + / -, Loop Thru: + / -)	1x Euroblock (4P) (Input: + / -, Loop Thru: + / -)	Input: 1x Euroblock (4P) (CH1: + / -, CH2: + / -) Satellite Output: 1x Euroblock (4P) (ST 1: + / -, ST 2: + / -)	Input: 1x Euroblock (4P) (Input: + / -, Loop Thru: + / -) Satellite Output: 1x Euroblock (4P) (ST 1: + / -, ST 2: + / -)
Transformer Taps	70V	60W (83Ω), 30W (170Ω), 15W (330Ω), 7.5W (670Ω)	30W (170Ω), 15W (330Ω), 7.5W (670Ω), 3.8W (1.3kΩ)	-
	100V	60W (170Ω), 30W (330Ω), 15W (670Ω)	30W (330Ω), 15W (670Ω), 7.5W (1.3kΩ)	200W (25Ω), 100W (50Ω), 50W (100Ω), 25W (200Ω)
Environmental	IP35 ³		IP35 ³	
Color (Grille)	VXS8:Black / VXS8W:White		VXS10S: Black, VXS10SW: White	
Dimensions (W x H x D)	278 x 430 x 239mm (10.9" x 16.9" x 9.4")		260 x 500 x 389mm (10.2" x 19.7" x 15.3")	
Weight	8.2kg (18.1lbs)		19.5kg (43.0lbs)	
Included accessories	Wall / Ceiling mount bracket, Terminal cover		Wall mount bracket	

*1 IEC

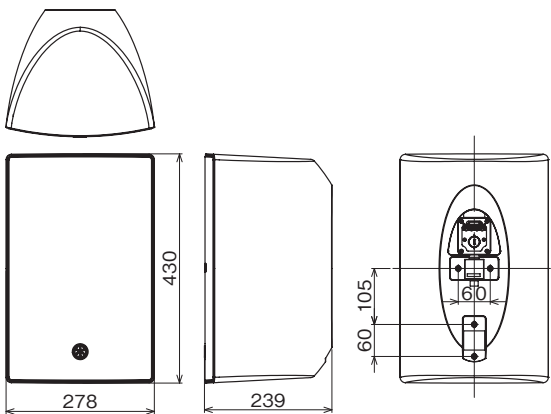
*2 Half space

*3 IP34 when installing the speaker to the ceiling vertically

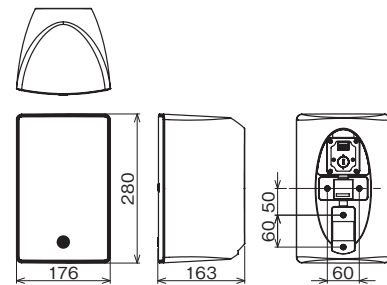
*4 Impedance lower limit(per satellite output): VXS10S/VXS10SW:4Ω VXS10ST/VXS10STW:8Ω

DIMENSIONS

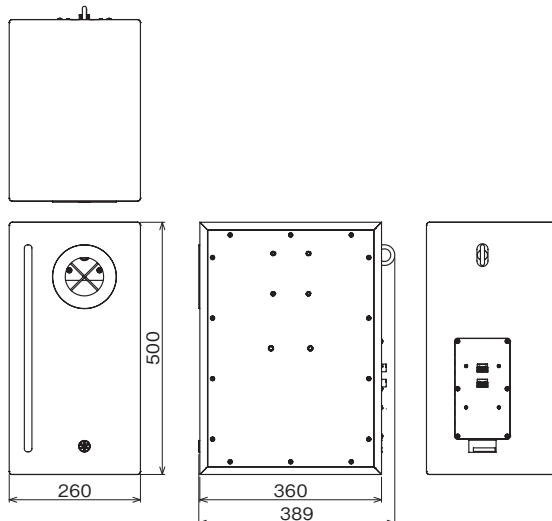
VXS8 / VXS8W



VXS5 / VXS5W



VXS10S / VXS10SW
VXS10ST / VXS10STW



unit : mm